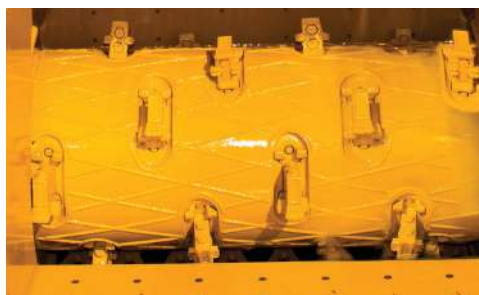


HG6800TX HORIZONTAL GRINDER



OPTIMAL CUTTING PERFORMANCE. The Series III hard-faced patented duplex drum has increased life with enhancements such as an independently secured wedge system and enhanced drum balancing.



CONVENIENT FEEDING. The HG6800TX features low sidewalls to aid in feeding whole trees and other larger material with less restriction, reducing the number of user interactions with the material.



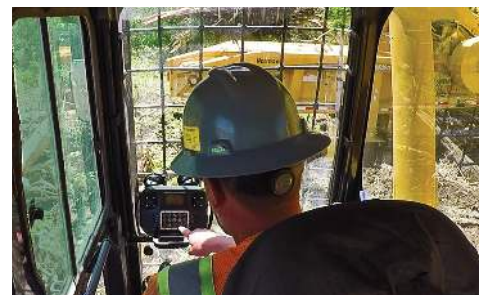
MOBILITY. The DT6 optional integrated dolly transport system eliminates the need for a dedicated trailer to move between sites.



JOBSITE SAFETY. The thrown object deflector (TOD) reduces the amount and distance of thrown material debris.



ENGINE HORSEPOWER. The dynamic combination of a high-horsepower engine on a machine boasting a compact design, results in a versatile horizontal grinder with high production capabilities.



CONVENIENT CONTROL. The transceiver remote is equipped with the machine control menu, providing the ability to supply the user with machine-operating information to monitor the machine's health, and a fault log.



VERMEER.COM



EQUIPPED TO
DO MORE.®

HG6800TX HORIZONTAL GRINDER

GENERAL DIMENSIONS

Max transport length: 48.1' (14.7 m)

Max transport width: 10' (3.1 m)

Max transport height: 12' (3.7 m)

ENGINE OPTION ONE

Make and model: CAT C27 Tier 4 Final

Gross horsepower: 950 hp (708 kW)

Fuel tank capacity: 350 gal (1324.9 L)

Fan: Hydraulic reversing

Clutch type: PT Tech HPT015 FX

ENGINE OPTION TWO

Make and model: CAT C27 Tier 2

Gross horsepower: 950 hp (708 kW)

Fuel tank capacity: 350 gal (1324.9 L)

Fan: Hydraulic reversing

Clutch type: PT Tech HPT015 FX

INFEED SYSTEM

Feed table width: 60" (152.4 cm)

Feed table length: 20' (6.1 m)

Feed opening height: 50" (127 cm)

Infeed roller diameter: 36.1" (91.7 cm)

DUPLEX DRUM

Duplex drum: Series III hardfaced drum

Drum cutting width: 62.4" (158.5 cm)

Tip diameter: 36.4" (92.5 cm)

Number of hammers: 10

Number of tips: 20

Screen area: 3583 in² (23116.1 cm²)

Thrown object deflector: Standard

DISCHARGE SYSTEM

Belt width: 48" (121.9 cm)

Load height: 14' (4.6 m)

TRACK

Track type: D5 double grouser

Track width: 26" (66.1 cm)

Ground speed: 2.8 mph (4.5 km/h)

CONTROL STATION

Radio remote type: Transceiver with LCD

Gauges: Panel-mount LCD with keypad inputs

Engine information: Yes

Machine information: Yes

Operational faults: Yes

OPTIONS

Damage Defense system

Magnetic discharge conveyor pulley

Extended warranty

Vermeer Confidence Plus® asset protection program

Special paint

Screen hoist

Air compressor

DT6 dolly transport system

Vermeer Corporation reserves the right to make changes in engineering, design and specifications; add improvements; or discontinue manufacturing at any time without notice or obligation.

Equipment shown is for illustrative purposes only and may display optional accessories or components specific to their global region. Please contact your local Vermeer dealer for more information on machine specifications. Vermeer, the Vermeer logo, Equipped to Do More and Vermeer Confidence Plus are trademarks of Vermeer Manufacturing Company in the U.S. and/or other countries.

Cat is a trademark of Caterpillar Inc. © 2017 Vermeer Corporation. All Rights Reserved. Printed in the U.S.A. Please recycle.

