

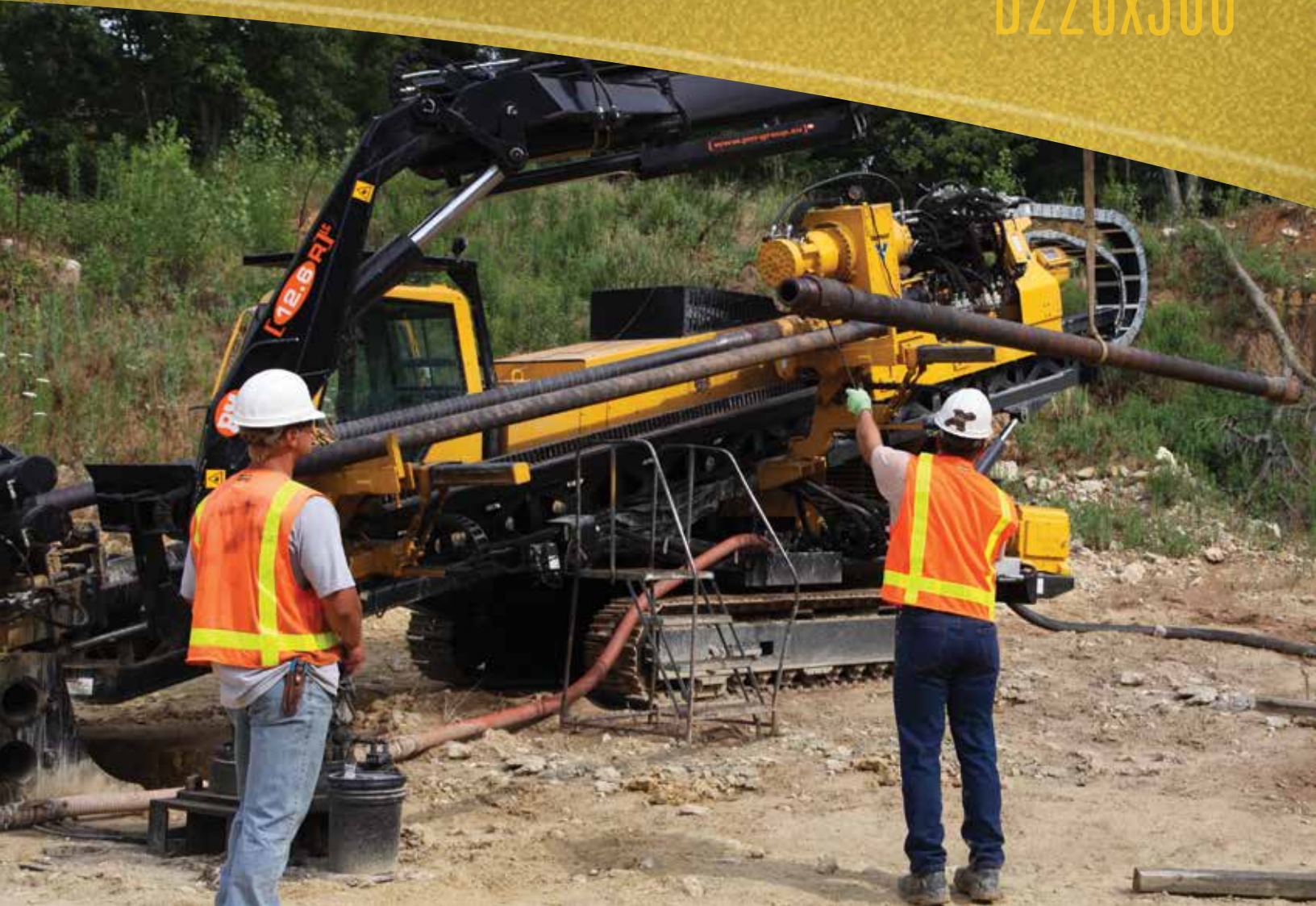
MAXI RIG/HORIZONTAL DIRECTIONAL DRILL

D220x300



Vermeer[®]

D220x300



THE VERMEER D220x300 NAVIGATOR® HORIZONTAL DIRECTIONAL DRILL HAS THE POWER OF A MAXI RIG IN A SELF-CONTAINED DESIGN WITH AN ONBOARD DRILLER'S CABIN, MUD PUMP, CRANE AND BUILT-IN ROD STAGER.



The power-to-size ratio allows for twice the pullback and rotation of similarly sized drills for versatile applications.



Its compact footprint is suited for hard-to-access, narrow jobsites, while its self-contained design lessens the need for cumbersome, expensive support equipment.



Optional knuckle-boom crane mounted on either side of the base anchor easily maneuvers heavy tooling, reducing need for support equipment.



The sliding vise moves 35.4" (89.9 cm) to help operators position the vise for maximum efficiency when reaming or pulling product.

D220x300



Vermeer offers the performance you need in a size you want. The Vermeer D220x300 Navigator® HDD has a footprint of 37-foot (11.3 m) length and 8.3-foot (2.5 m) width. This power-to-size ratio means the drill has versatile applications from urban utility work to pipeline installation.



The D220x300 shares common controls with other drills in the Navigator lineup, decreasing the operator training time and allowing for faster startups.



Available with remote tracking for increased visibility on crowded jobsites.



An optional onboard Weatherford triplex mud pump has a maximum capacity of 330 gpm (1249.2 L/min) for sufficient flow for a larger diameter pullback.



A single row, sliding arm rod loader allows for the staging of five rods at one time, increasing boring efficiency by minimizing rod load time.



Specifications

TRANSPORT DIMENSIONS

Length: 37' (11.3 m)
 Width: 8.3' (2.5 m)
 Height: 11.3' (3.4 m)
 Weight: 74,000 lb (33,565.8 kg)

OPERATIONAL

Thrust: 242,100 lb (1076.9 kN)
 Pullback: 242,100 lb (1076.9 kN)
 Max carriage speed (high): 120 ft/min (36.6 m/min)
 Max carriage speed (low): 34 ft/min (10.4 m/min)
 Max spindle torque (low): 30,200 ft-lb
 (40,945.7 Nm)
 Max spindle torque (medium): 21,100 ft-lb
 (28,607.8 Nm)
 Max spindle torque (high): 12,100 ft-lb
 (16,405.4 Nm)
 Max spindle speed: 164
 Max ground drive speed: 2.4 mph (3.9 km/h)
 Automated rod loader: No
 Noise level at operator's ear: 85 d(B)a
 Drill rack angle: 10 – 17°

DRILLING FLUID SYSTEM

Max flow: 330 gpm (1249.2 L/min)
 Max pressure: 1200 psi (82.7 bar)
 Max flow at max pressure: 213 gpm (806 L/min)
 Brand: Weatherford

FEATURES

Breakout system: Open-top, dual clamp,
 10-1/2" (26.7 cm) diameter opening
 Drilling lights
 Flow indicator
 Cab
 Strike alert
 Remote lockout

POWER

Engine: CAT C13 ACERT Tier 4i
 Fuel type: Diesel
 Max engine rpm: 2150 rpm
 Gross horsepower: 415 hp (309.5 kW)

FLUID CAPACITIES

Fuel tank: 134 gal (507.3 L)
 Engine crankcase with filter: 36 qt (34.1 L)
 Hydraulic tank: 166 gal (628.4 L)
 Hydraulic system: 200 qt (757.1 L)
 Engine cooling system: 84 gal (79.5 L)

CRANE

Weight: 2600 lb (1179.9 kg)
 Max lift capacity: 5950 lb (2700 kg)
 Max lift capacity at full reach: 2530 lb (1150 kg)
 Max reach: 26.25' (8.0 m)
 Rotation: 406°

HYDRAULIC SYSTEM

Max pump flow at: 32 gpm (121.1 L/min)
 Auxiliary pump relief pressure: 3000 psi
 (206.8 bar)

DRILL PIPE

Drill rod thread: NC50 DS (4-1/2" [11.4 cm]
 IF double shoulder)
 Thread type: API
 Length: 20.3' (6.2 m)
 Rod diameter: 5" (12.7 cm)
 Wall thickness: .362" (9.2 mm)
 Joint inside diameter: 3.5" (8.9 cm)
 Joint outside diameter: 6-5/8" (16.8 cm)