

D40x55 S3 NAVIGATOR®

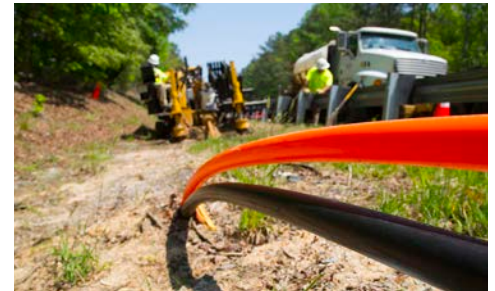
HORIZONTAL DIRECTIONAL DRILL



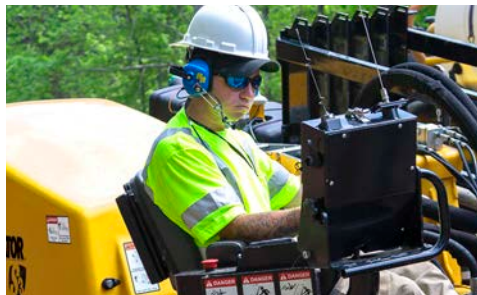
PREMIUM PERFORMANCE. With 40,000 lb (177.9 kN) of thrust/pullback and 5500 ft-lb (7457 Nm) of rotational torque, the D40x55 S3 offers a 10% increase in thrust and rotation over its predecessor, the D36x50 Series II — helping to maximize productivity.



VARIETY OF ROD OPTIONS. The D40x55 S3 is available with a range of drill rod options, including a 10' (3 m) length in 2.38" (6 cm) or a 2.63" (6.7 cm) diameter, and a 15' (4.6 m) length in a 2.63" (6.7 cm) diameter. A variety of rod options allows the drill to be configured to the specific needs of the contractor.



CLASS-LEADING CYCLE TIMES. The D40x55 S3 features a carriage speed of 188 ft/min (57.3 m/min) — which is 7% faster than its predecessor, the D36x50 Series II — helping contractors install more linear feet per day.



SIGNIFICANT SOUND REDUCTION. With a 104 dB(A) guaranteed sound power level and an operator ear rating of 82.9 dB(A) [in-cab rating of 75.7 dB(A)], the D40x55 S3 is significantly quieter than its predecessor — contributing to a quieter working environment with less neighborhood disturbance and easier communication among the crew.



COMFORTABLE CAB. The excavator-style cab provides operators more legroom and greater comfort.



AURORA™ TOUCHSCREEN DISPLAY. Interactive full-color touchscreen display delivers real-time, easy-to-view locate information, bore plans and more that can help increase productivity.

D40x55 S3 NAVIGATOR® HORIZONTAL DIRECTIONAL DRILL

GENERAL WEIGHTS AND DIMENSIONS

Min transport length: : 20.1' (6.1 m)

Min transport width: 89" (226.1 cm)

Min transport height: 76" (193 cm)

Min weight: 22,380 lb (10,151.4 kg)

Max weight: 26,110 lb (11,843.3 kg)

ENGINE OPTION ONE

Make and model: John Deere 4045

Fuel type: Ultra low sulfur diesel

Max engine rpm: 2400 rpm

Gross horsepower: 140 hp (104 kW)

EPA certification family: Tier 4 Final (EU Stage IV)

ENGINE OPTION TWO

Make and model: John Deere 4045

Fuel type: Diesel

Max engine rpm: 2400 rpm

Gross horsepower: 140 hp (104 kW)

EPA certification family: Tier 3 (EU Stage IIIA)

OPERATIONAL

Thrust/Pullback: 40,000 lb (177.9 kN)

Max carriage speed at max engine rpm: 188 ft/min (57.3 m/min)

Max spindle torque (low at max engine rpm): 5500 ft-lb (7457 Nm)

Max spindle speed at max engine rpm: 227 rpm

Min bore diameter: 4" (10.2 cm)

Max ground drive speed at max engine rpm (fwd): 3.3 mph (5.3 km/h)

Noise level at operator's ear: 82.9 dB(A)

Noise level at operator's ear (cab) : 75.7 dB(A)

Drill rack angle [10' (3 m) rod]: 15.5-20.5° (27.7-37.4%)

Drill rack angle [15' (4.6 m) rod]: 12.5-17.5° (22.2-31.5%)

FLUID CAPACITIES

Fuel tank: 44 gal (166.3 L)

Antifreeze tank capacity: 1.6 gal (6 L)

DRILLING FLUID SYSTEM OPTION ONE

Max flow: 50 gpm (189.3 L/min)

Max pressure: 1050 psi (70.2 bar)

DRILLING FLUID SYSTEM OPTION TWO

Max flow: 70 gpm (264.6 L/min)

Max pressure: 1300 psi (87 bar)

FEATURES

Breakout system: Standard hydraulic vise

Drilling lights: Standard

Flow indicator: Standard

Stakedown system: Standard

Strike alert: Standard

Remote lockout: Standard

DRILL PIPE OPTION ONE

Type: Firestick® drill rod

Length: 10' (3 m)

Rod diameter: 2.38" (6 cm)

Weight: 80 lb (36.3 kg)

Bend radius: 170' (51.8 m)

DRILL PIPE OPTION TWO

Type: Firestick drill rod

Length: 10' (3 m)

Rod diameter: 2.63" (7 cm)

Weight: 131 lb (59.5 kg)

Bend radius: 228' (69.5 m)

DRILL PIPE OPTION THREE

Type: Firestick drill rod

Length: 15' (4.6 m)

Rod diameter: 2.63" (6.7 cm)

Weight: 165 lb (74.9 kg)

Bend radius: 170' (51.8 m)

InSite
EQUIPPED

Vermeer

EQUIPPED TO
DO MORE.™

Vermeer Corporation reserves the right to make changes in engineering, design and specifications; add improvements; or discontinue manufacturing at any time without notice or obligation. Equipment shown is for illustrative purposes only and may display optional accessories or components. Please contact your local Vermeer dealer for more information on machine specifications. Vermeer, the Vermeer logo, Equipped to Do More, Firestick, InSite and Navigator are trademarks of Vermeer Manufacturing Company in the U.S. and/or other countries. Aurora is a registered trademark of Digital Control Incorporated. John Deere is a registered trademark of Deere & Company.
© 2015 Vermeer Corporation. All Rights Reserved. Printed in the U.S.A. Please recycle.