

MAXI RIG/HORIZONTAL DIRECTIONAL DRILL

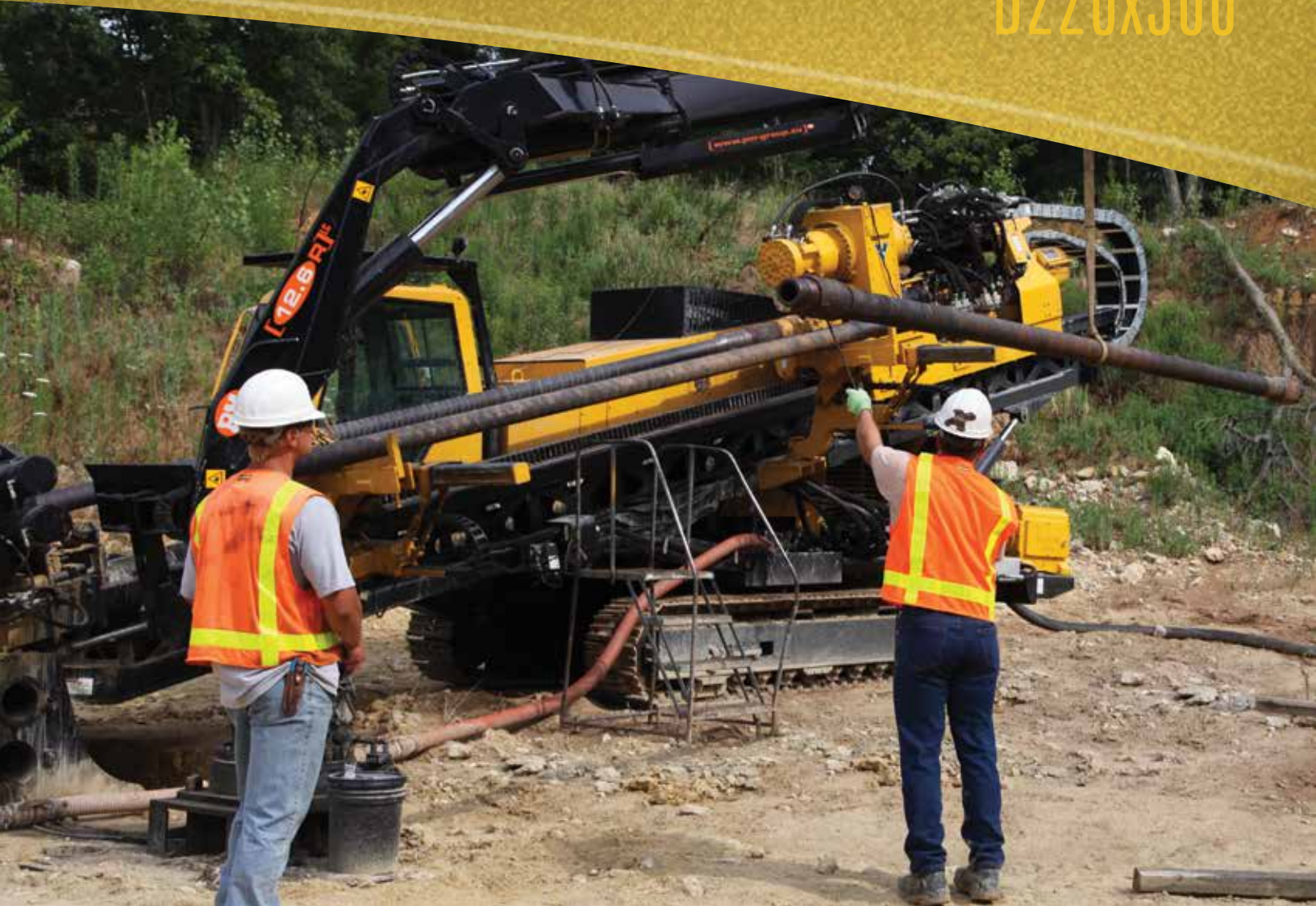
# D220x300



Vermeer®



# D220x300



**THE VERMEER D220x300 NAVIGATOR® HORIZONTAL DIRECTIONAL DRILL HAS THE POWER OF A MAXI RIG IN A SELF-CONTAINED DESIGN WITH AN ONBOARD DRILLER'S CABIN, MUD PUMP, CRANE AND BUILT-IN ROD STAGER.**



*The power-to-size ratio allows for twice the pullback and rotation of similarly sized drills for versatile applications.*



*Its compact footprint is suited for hard-to-access, narrow jobsites, while its self-contained design lessens the need for cumbersome, expensive support equipment.*



*Optional knuckle-boom crane mounted on either side of the base anchor easily maneuvers heavy tooling, reducing need for support equipment.*



*The sliding vise moves 35.4" (89.9 cm) to help operators position the vise for maximum efficiency when reaming or pulling product.*



# D220x300



Vermeer offers the performance you need in a size you want. The Vermeer D220x300 Navigator® HDD has a footprint of 37-foot (11.3 m) length and 8.3-foot (2.5 m) width. This power-to-size ratio means the drill has versatile applications from urban utility work to pipeline installation.



*The D220x300 shares common controls with other drills in the Navigator lineup, decreasing the operator training time and allowing for faster startups.*



*Available with remote tracking for increased visibility on crowded jobsites.*



*An optional onboard Weatherford triplex mud pump has a maximum capacity of 330 gpm (1249.2 L/min) for sufficient flow for a larger diameter pullback.*



*A single row, sliding arm rod loader allows for the staging of five rods at one time, increasing boring efficiency by minimizing rod load time.*



## Specifications

### TRANSPORT DIMENSIONS

Length: 37' (11.3 m)  
 Width: 8.3' (2.5 m)  
 Height: 11.3' (3.4 m)  
 Weight: 74,000 lb (33,565.8 kg)

### OPERATIONAL

Thrust: 242,100 lb (1076.9 kN)  
 Pullback: 242,100 lb (1076.9 kN)  
 Max carriage speed (high): 120 ft/min (36.6 m/min)  
 Max carriage speed (low): 34 ft/min (10.4 m/min)  
 Max spindle torque (low): 30,200 ft-lb  
 (40,945.7 Nm)  
 Max spindle torque (medium): 21,100 ft-lb  
 (28,607.8 Nm)  
 Max spindle torque (high): 12,100 ft-lb  
 (16,405.4 Nm)  
 Max spindle speed: 164  
 Max ground drive speed: 2.4 mph (3.9 km/h)  
 Automated rod loader: No  
 Noise level at operator's ear: 85 d(B)a  
 Drill rack angle: 10 – 17°

### DRILLING FLUID SYSTEM

Max flow: 330 gpm (1249.2 L/min)  
 Max pressure: 1200 psi (82.7 bar)  
 Max flow at max pressure: 213 gpm (806 L/min)  
 Brand: Weatherford

### FEATURES

Breakout system: Open-top, dual clamp,  
 10-1/2" (26.7 cm) diameter opening  
 Drilling lights  
 Flow indicator  
 Cab  
 Strike alert  
 Remote lockout

### POWER

Engine: CAT C13 ACERT Tier 4i  
 Fuel type: Diesel  
 Max engine rpm: 2150 rpm  
 Gross horsepower: 415 hp (309.5 kW)

### FLUID CAPACITIES

Fuel tank: 134 gal (507.3 L)  
 Engine crankcase with filter: 36 qt (34.1 L)  
 Hydraulic tank: 166 gal (628.4 L)  
 Hydraulic system: 200 qt (757.1 L)  
 Engine cooling system: 84 gal (79.5 L)

### CRANE

Weight: 2600 lb (1179.9 kg)  
 Max lift capacity: 5950 lb (2700 kg)  
 Max lift capacity at full reach: 2530 lb (1150 kg)  
 Max reach: 26.25' (8.0 m)  
 Rotation: 406°

### HYDRAULIC SYSTEM

Max pump flow at: 32 gpm (121.1 L/min)  
 Auxiliary pump relief pressure: 3000 psi  
 (206.8 bar)

### DRILL PIPE

Drill rod thread: NC50 DS (4-1/2" [11.4 cm]  
 IF double shoulder)  
 Thread type: API  
 Length: 20.3' (6.2 m)  
 Rod diameter: 5" (12.7 cm)  
 Wall thickness: .362" (9.2 mm)  
 Joint inside diameter: 3.5" (8.9 cm)  
 Joint outside diameter: 6-5/8" (16.8 cm)